

# DOWNTOWN TEMPE

## SUSTAINABLE NEIGHBORHOODS FOR HAPPINES

This downtown Tempe neighborhood includes residential homes, apartment and condo complexes, numerous restaurants and coffee shops, K-12 schools, and business and government offices. There are two large parks—Mitchel Park and Clark Park as well as smaller community gardens. On Saturdays there is a farmers market at Clark Park. The farmers market sells fruit and vegetables from local vendors as well as vegetables and eggs from the local community garden at Clark Park and at the nearby Escalante Community gardens. The Clark Park community garden also has plots for student groups (see image). The farmers market accepts Women Infants & Children (WIC) federal



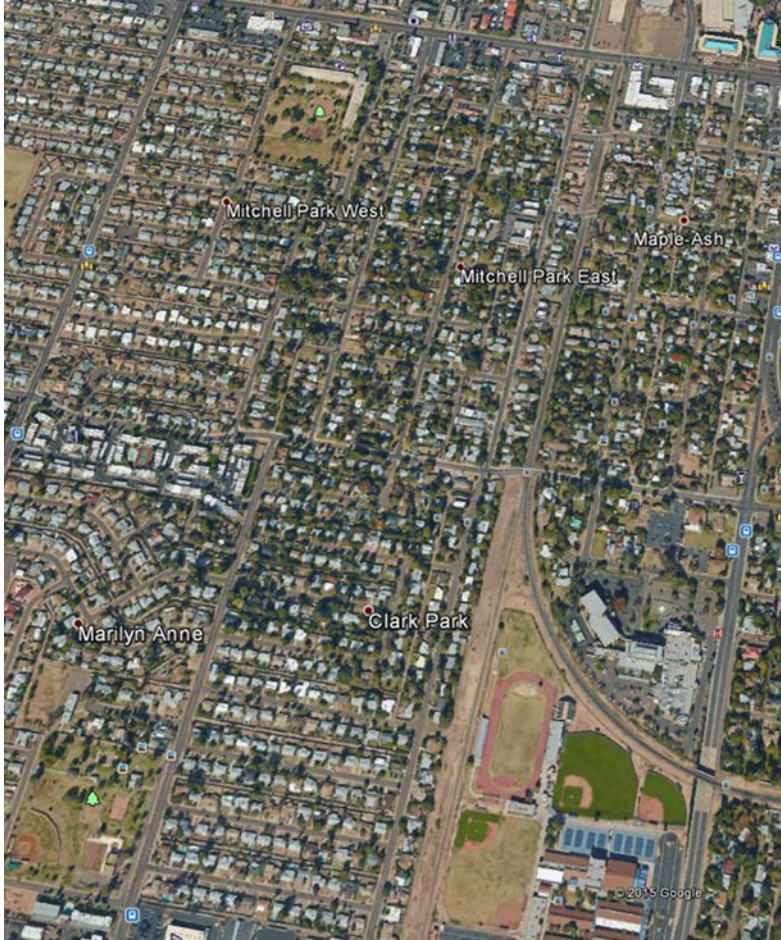
vouchers and food stamp vouchers. There is also a grocery store called Tempe Farmer’s Market that is open 7-days a week and sells locally produced products and has a locally owned/operated coffee shop within the market.

This neighborhood has bike lanes, sidewalks, and the light rail has stops throughout as well as a free bus to various other locations in Tempe (see image). In order to slow traffic down on residential streets



there are speed bumps and art installations designed by local residents. The landscaping varies throughout the neighborhood, including some desert landscaping, some grass landscaping, and some trees. Some of the residential yards still have flood irrigation to keep their lawns green. The water that is used for flood irrigation is canal water, whereas the water that comes in residents’ taps and showers is purified water by the city.

The Tempe City Council just launched a sustainability commission. The sustainability commission is made up of community volunteers and collaborates with the City Council members to develop a plan for improving sustainability practices throughout Tempe.



The Sustainability Commission is currently advising the Tempe City Council waste practices. Right now Tempe's curbside recycling program primarily targets single-family homes so most apartment complexes lack recycling programs. Tempe already has a yard waste composting program and the community gardens all have composting piles. The composting program does not include other organic waste (like food scraps).

Many of the single-family homes in the neighborhood have compost piles, backyard chickens, and gardens as well as solar panels (see image). The Tempe Public Library has just embarked on a solar panel project in which they are covering the roof as well as the parking lot with panels. There is a free household energy audit program that is subsidized by APS and

residents that participate in the audit receive compact fluorescent lightbulbs. This community does not have a Home Owners Association, however there is a neighborhood group that organizes block parties and welcomes new residents to the neighborhood with produce from the community garden.

